



QPoint™ Tap Water Filter



Combining fixed Docking Station and exchangeable Filter Capsule for up to 2 months use

Features

- ▶ Secure double layer 0.2 µm sterilizing grade filter membranes
- ▶ Fixed Docking Station and exchangeable Filter Capsule
- ▶ Improved pre-filtration
- ▶ Intelligent protection from back splash
- ▶ Reusable and recyclable materials

Benefits

- ▶ Retains microorganisms without volume restriction
- ▶ Waste reduction, cost reduction and improved logistics
- ▶ Higher dirt capacity for better flow rates
- ▶ Minimizes retrograde contamination
- ▶ Environmentally friendly



QPoint - More than Filtration

Background

The QPoint Tap Water Filter Assembly with exchangeable Filter Capsule for up to 62 day (2 months) use provides 0.2 µm sterilizing-grade filtered water at the Point-of-Use^{1, 2}.

The high technology integrated prefiltration layer delivers exceptional particulate trapping capacity with good flow rates, and protects the sterilizing grade membranes enabling long performance life. The Filter Capsule retains bacteria, protozoa, fungi and particles.

A combination of non-leaching bacteriostatic additive with >99% effectiveness and inner shield protection within the Filter Capsule minimizes the risk of retrograde contamination over the life of the product.

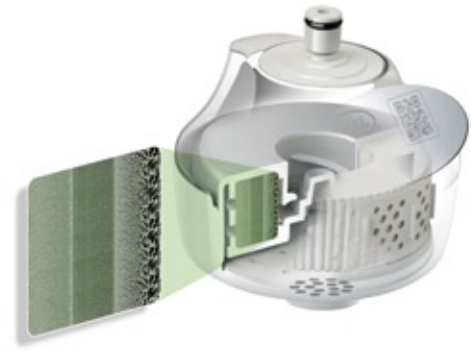
The smooth, chrome finish Docking Station is hygienically designed, and will fit to all standard tap water outlets. The combination of the fixed Docking Station with the disposable Filter Capsule is compact, reduces waste, reduces costs and improves logistics for the user.

Technical Data

QPoint Docking Station - Tap Assembly (QDTC)

| | |
|--------------------------------|--|
| Diameter (nominal) | 3.5" (88 mm) |
| Weight (nominal) | 3.0 oz (84 g) |
| Temperature | Continuous influent temperature 140 °F (60 °C) Maximum influent temperature 167 °F (75 °C) for a total cumulative period of 90 minutes over the life of each Filter Capsule |
| Maximum Operating Pressure | 75 psi (5 bar) at continuous 140 °F (60 °C) influent temperature |
| Cleansing and Disinfection | External surfaces may be cleaned using common sanitising agents During routine water system disinfection the Docking Station with attached Filter Capsule can be left in place to enable the outlet to be flushed |
| Main Materials of Construction | Polycarbonate/Acrylonitrile Butadiene Styrene (51%), Glass Filled Nylon (22%), Polyester (20%), Stainless Steel (4%) |
| Packaging | Recycled cardboard outer packaging |

* For Quick Connect Adaptors suitable for use with QPoint Docking Station - Tap Assembly with Quick Connect Inlet (QDTC), please contact your local sales office or visit www.pall.com/QPoint.



QPoint Filter Capsule

| | | |
|--------------------------------|---|--|
| Flow Rates (nominal) | 1.5 gal / min at 15 psi 3.5 gal / min at 44 psi 5.0 gal / min at 75 psi | 5.7 L / min at 1 bar 13.1 L / min at 3 bar 18.8 L / min at 5 bar |
| Diameter (nominal) | 3.5" (88 mm) | |
| Weight (nominal) | 4.2 oz (119 g) | |
| Temperature | Continuous influent temperature 140 °F (60 °C) Maximum influent temperature 167 °F (75 °C) for a total cumulative period of 90 minutes over the life of each Filter Capsule | |
| Maximum Operating Pressure | 75 psi (5 bar) at continuous 140 °F (60 °C) influent temperature | |
| Sanitisation | Compatible and complementary to common surface and systemic disinfection programs | |
| Main Materials of Construction | Polyester (83%), Polypropylene (10%), Polyethersulphone (5%), (Recyclable) | |
| Packaging | Recycled cardboard outer packaging. Ethylene Vinyl Acete (EVA) plastic film blister. Tyvek polyethylene lid | |

Ordering Information

| Reorder Code | Product Description | Packaging |
|------------------------|---------------------------------------|--------------|
| Docking Station | | |
| QDTC | Tap Assembly with Quick Connect Inlet | 1 unit/pkg |
| Filter Capsules | | |
| QJ212U | Jet Outlet, 0.2 µm Filter | 12 units/pkg |
| QJ22U | Jet Outlet, 0.2 µm Filter | 2 units/pkg |

For information on the bespoke software QPData Traceability System please visit www.pall.com/QPoint or contact your local sales office.

References

- American Standard Test Method (ASTM) F838-05. "Determining Bacteria Retention of Membrane Filters Utilised for Liquid Filtration".
- Health Industry Manufacturers Association (HIMA) Document No.3, Vol. 4. Microbiological Evaluation of Filters for Sterilizing Liquids.



Pall Corporate Headquarters

25 Harbor Park Drive
Port Washington
NY 11050


(866) 347-3428 phone
pouwater.us@pall.com email

Visit us on the Web at www.pall.com/QPoint

International Offices

Pall Corporation has offices and plants throughout the world in locations such as: Argentina, Australia, Austria, Belgium, Brazil, Canada, China, France, Germany, India, Indonesia, Ireland, Italy, Japan, Korea, Malaysia, Mexico, the Netherlands, New Zealand, Norway, Poland, Puerto Rico, Russia, Singapore, Spain, Sweden, Switzerland, Taiwan, Thailand, the United Kingdom, the United States, and Venezuela. Distributors in all major industrial areas of the world.

The information provided in this literature was reviewed for accuracy at the time of publication. Product data may be subject to change without notice. For current information consult your local Pall distributor or contact Pall directly.

© 2014 Pall Corporation. Pall,  and QPoint are trademarks of Pall Corporation. ® indicates a trademark registered in the USA. TM indicates a common law trademark.