



Medical

QPoint™ Shower Docking Station Pictorial Installation Guide

Description

The Pall QPoint Docking Station - Shower Assembly is supplied non-sterile.

For complete instructions for use, refer to the product's package insert.

Cleansing and Disinfection

- If the Docking Station is visibly contaminated or known to have been contaminated, the external surfaces may be cleansed using commonly available chrome compatible cleaning products. For further information please see www.pall.com/medical.
- Regular use of these products on the Docking Station external surfaces as part of a cleansing regimen will not affect operation. At no point should the Docking Station be disconnected during cleansing or use.
- During routine water system disinfection, the Docking Station with attached Filter Capsule can be left in place to enable the outlet to be flushed.

Recommendations For Use

- Keep Docking Station in holder during use to avoid inadvertent contamination of the Filter Capsule.

Disconnection

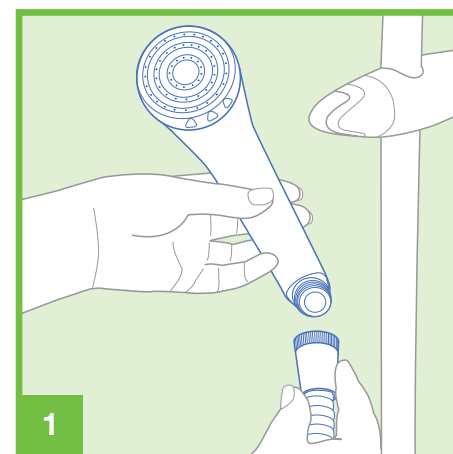
- Detach Docking Station from shower hose connection and remove.

Disposal

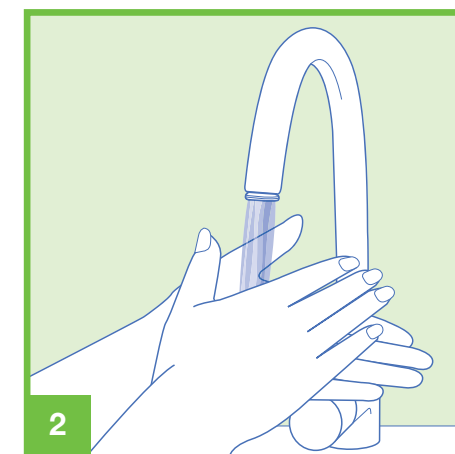
- The used Docking Station should be disposed of according to local procedures. For information on materials of construction please see www.pall.com/medical.

For additional information on Pall QPoint™ products please see www.pall.com/medical or contact your local Pall representative, distributor or retailer.

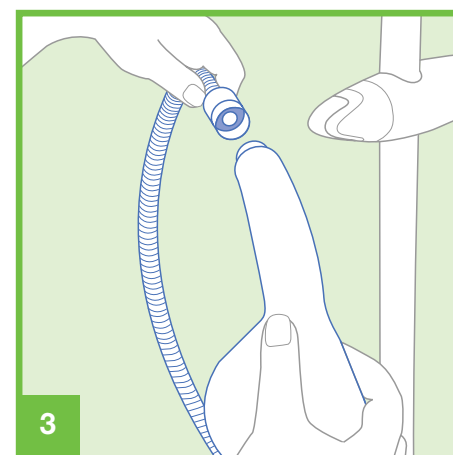
Connection



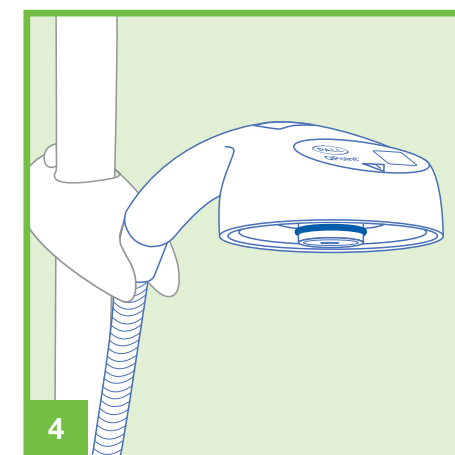
- Remove existing shower head.



- Wash hands.



- Insert supplied gasket into shower hose outlet.
- Attach QPoint Shower Docking Station.



- Place in shower holder in preparation for QPoint Filter Capsule installation.



Medical

Pall Corporate Headquarters
25 Harbor Park Drive
Port Washington
NY 11050

(866) 347-3428 phone
pouwater.us@pall.com email

Pall European Headquarters
Avenue de Tivoli 3
1700 Fribourg
Switzerland

+41 (0)26 350 53 00 phone
LifeSciences.EU@pall.com email

Pall Asia-Pacific Headquarters
1 Science Park Road, #05-09/15
East Wing, The Capricorn
Singapore Science Park II, Singapore 117528

+65 6389 6500 phone
sgcustomerservice@pall.com email

Visit us on the Web at www.pall.com/medical

© 2016 Pall Corporation. Pall, and QPoint are trademarks of Pall Corporation. ® indicates a trademark registered in the USA. TM indicates a common law trademark. Part numbers quoted are covered by the Copyright of Pall Corporation.

7/124, GN160216.2WGL



Medical

QPoint™ Filter Capsule - Rose Outlet Pictorial Installation Guide

Description

The Pall QPoint Filter Capsules are:

- Provided sterile.
- Disposable and may be used for up to 62 days (2 months) following initial connection.

For complete instructions for use, refer to the product's package insert.

Cleansing and Disinfection

- If the Filter Capsule is visibly, or known to have been, contaminated, it should be replaced.
- Where cleaning protocols are in place, the external surfaces of the filter capsule may be cleaned using a new disposable wipe and commonly available cleaning products (chrome compatible if Docking Station will also be cleaned). For further information on compatible cleansing products please see www.pall.com/medical.
- At no point should the Filter Capsule be disconnected during cleansing.
- During routine water system disinfection, the Filter Capsule should be left in place to enable the water outlet to be flushed.

Recommendations For Use

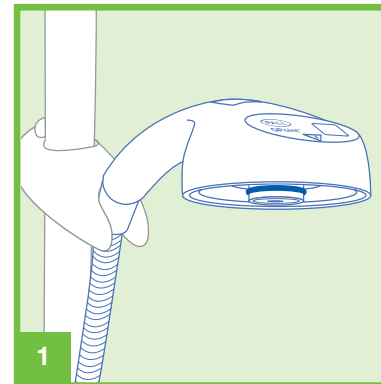
- Handle aseptically.
- Wash hands and/or wear sterile gloves prior to opening filter unit packaging.
- To minimize retrograde contamination the Filter Capsule **should not be**:
 - Positioned directly into a drainage point
 - Immersed in collected water
 - Placed on the floor, in a basin or bath or in contact with contaminated surfaces or cloths.
 - Touched during use.

Disposal

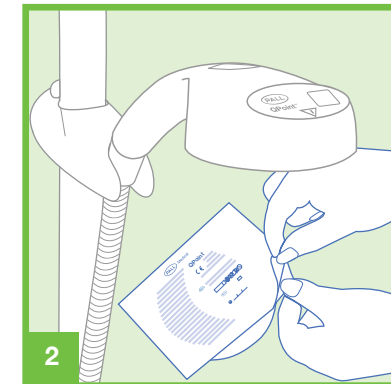
- The used Filter Capsule should be disposed of according to local procedures. All materials are suitable for plastics recycling, as per local guidelines. For information on materials of construction please see www.pall.com/medical.

For additional information on Pall QPoint™ products please see www.pall.com/medical or contact your local Pall representative, distributor or retailer.

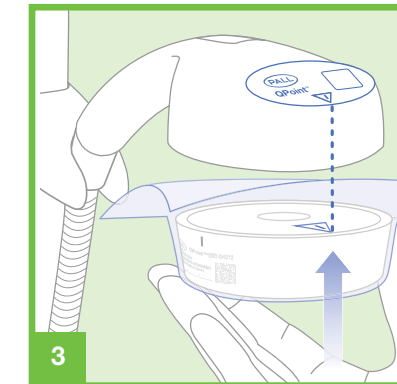
Connection



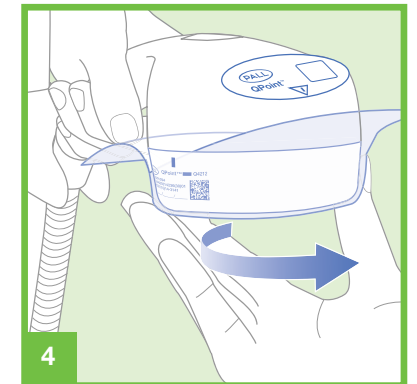
- Ensure QPoint Docking Station is clean and dry to avoid inadvertent contamination.
- Ensure o'ring seal is visible, in position and intact.



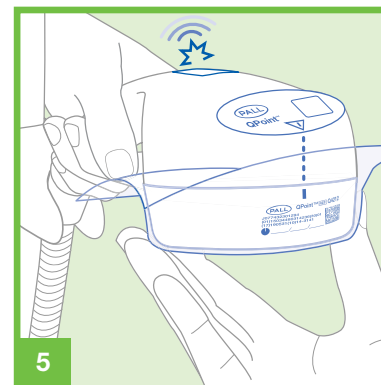
- The plastic unit packaging can be used to protect the device from cross contamination during installation. Leave in place during installation.
- While holding Filter Capsule securely through unit packaging, peel back lid.



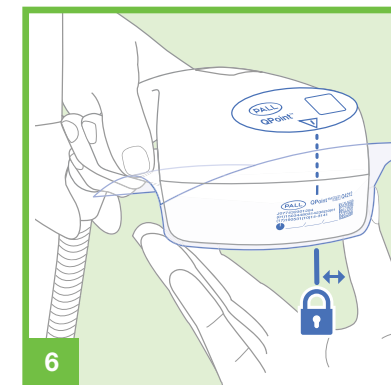
- Align embossed triangle on the top surface on the Filter Capsule with the marker triangle in the centre of the Docking Station front panel.



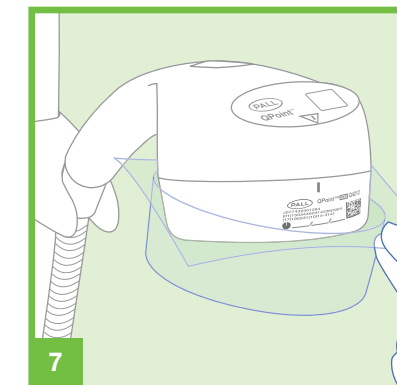
- With the triangles aligned, lift Filter Capsule upwards to the Docking Station and rotate a 1/4 turn to the right.
- The Filter Capsule labelling details should be aligned beneath the Docking Station front panel.



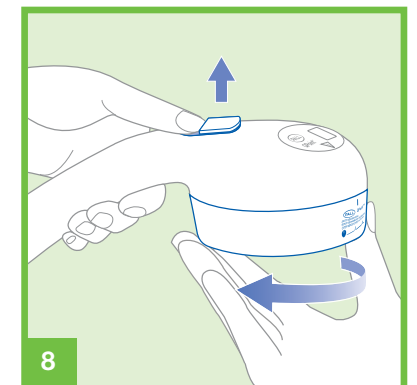
- The locking pin will engage Filter Capsule and the marker bar will be aligned with the Docking Station marker triangle.



- Check engagement. Try to rotate Filter Capsule to the left; if there is no movement Filter Capsule is locked.



- Remove protective plastic unit packaging prior to use.
- The Filter Capsule can be used for up to 62 days (2 months).
- Suspending use following initial connection does not extend filter life.



- Lift release button on the Docking Station to disengage Filter Capsule.
- Turn Filter Capsule to the left to remove.
- Used Filter Capsules should be disposed of according to local procedures.

Disconnection



Pall Corporate Headquarters
25 Harbor Park Drive
Port Washington
NY 11050

(866) 347-3428 phone
pallwater.us@pall.com email

Pall European Headquarters
Avenue de Tivoli 3
1700 Fribourg
Switzerland

+41 (0)26 350 53 00 phone
LifeSciences.EU@pall.com email

Pall Asia-Pacific Headquarters
1 Science Park Road, #05-09/15
East Wing, The Capricorn
Singapore Science Park II, Singapore 117528

+65 6389 6500 phone
sgcustomerservice@pall.com email

Visit us on the Web at www.pall.com/medical

© 2016 Pall Corporation. Pall, and QPoint are trademarks of Pall Corporation. ® indicates a trademark registered in the USA. TM indicates a common law trademark. Part numbers quoted are covered by the Copyright of Pall Corporation.

7/124, GN160216.2WGL